

ModelGPD

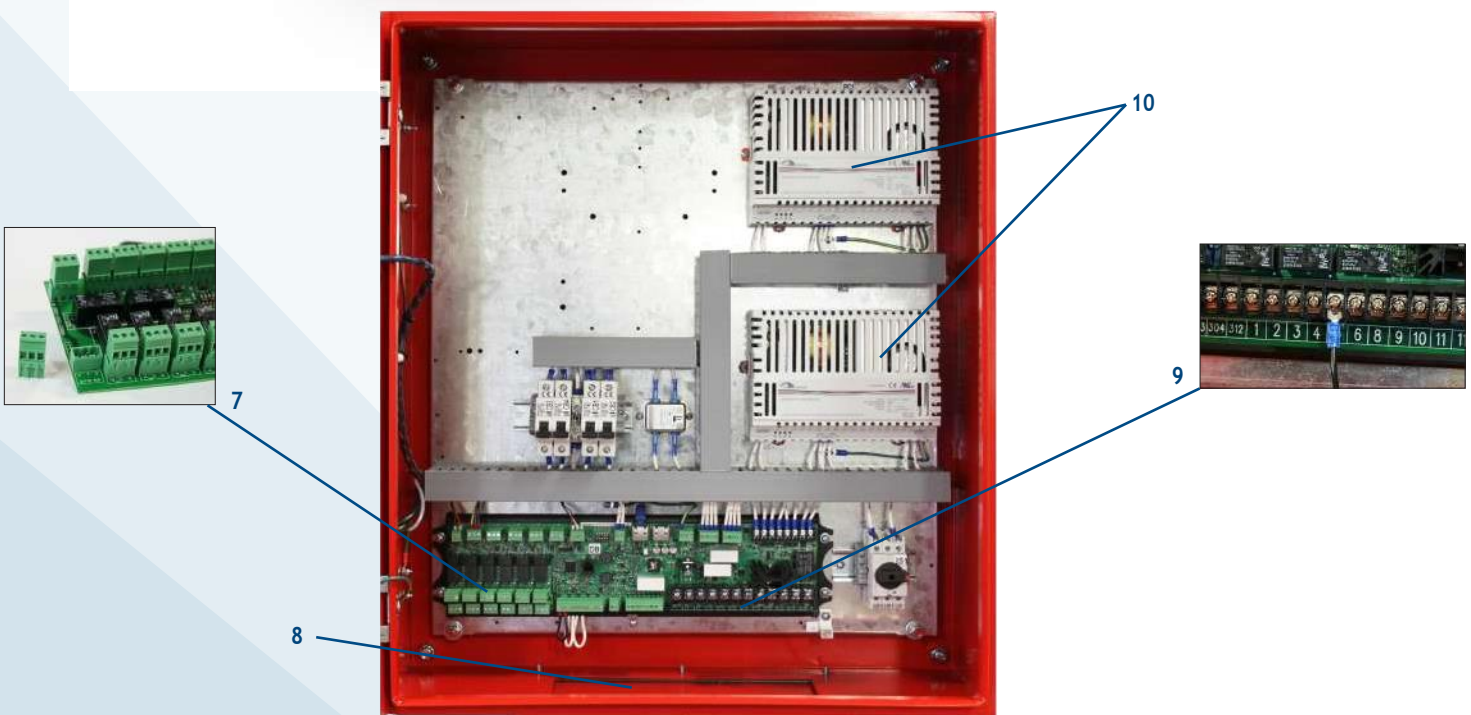
Diesel Engine Fire Pump Controllers

Standard Features

- ViZiTouch V2 operator interface
- NEMA 2 assembly
- Pressure and event recorder
- Battery voltage and amperage display
- Run Test push button
- HAND - OFF - AUTO selector switch
- Manual crank pushbuttons (2)
- Stop pushbutton
- Remote start / deluge valve start provision
- Pressure transducer and run test solenoid valve externally mounted
- Gland plate
- Audible alarm
- Alarm contacts for remote indication
- Weekly exercise programmable time clock
- Crank cycle
- Programmable automatic shutdown (minimum run timer)
- Programmable sequential start timer (delay start timer)



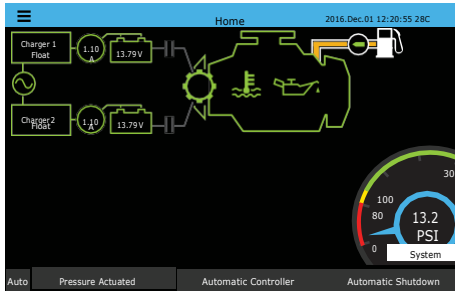
1. Alarm bell
2. Externally mounted pressure transducer and run test solenoid valve with protective cover
3. Key lock
4. ViZiTouch V2 operator interface
5. Exterior USB Port
6. HAND-OFF-AUTO selector switch
7. Remote alarm contacts with removable terminals
8. Gland Plate
9. Automotive type engine connections
10. Battery chargers





HOME SCREEN

Diesel Fire Pump Controller



ON-SCREEN MENU

- Home
- Alarm
- Configuration
- History
- Service
- Manual
- Languages

SETTINGS

Config 2016.Dec.01 14:34:28 26C

Pressure PSI Max. Pres. 300

PT1 Cut-out 150

Cut-in 100

Periodic test Monday

Week Test Duration (min) 5

RUN TEST Duration (min) 30

Auto. Shutdown (m) Duration (min) 10

Date and time 2016.Dec.01 14:09:55

Advanced

User login

EVENTS

History	Events	2016.Dec.01 14:34:28 26C
2016.12.01	14:28:52	Engine Trouble: INACTIVE
2016.12.01	14:28:23	Diesel Card Alarm Bell OFF
2016.12.01	14:28:09	Engine Trouble: OCCURED
2016.12.01	14:28:08	Engine Trouble: OCCURED
2016.12.01	14:12:06	Underpressure: INACTIVE
2016.12.01	14:11:22	Engine Fail to Start: INACTIVE
2016.12.01	14:09:55	Alarms Reset
2016.12.01	14:08:46	Diesel Card Alarm Bell ON
2016.12.01	14:03:11	HOA in MANUAL Position
2016.12.01	14:03:03	HOA in AUTO Position

VIZITOUCH V2 MAJOR FEATURES INCLUDE:

- Touch screen operation with 7" color display and intuitive graphics
- Multi-language
- Upgradable software
- Password protected

HISTORY/STATISTICS

Statistics 2016.Dec.01 14:34:28 26C

First Service Statistics

From

Since 2016.12.01 14:28:09

On Time 01-04-08-27

Motor

On Time 0-00-08-57

Start Count 20

Last Started On 2016.12.01 14:08:46

Pressure

Minimum 99.1 PSI

SERVICE

Service 2016.Dec.01 14:33:06 26C

TORNATECH

The Americas +1 514 334-0523 +1 800 363-3446 (Toll Free)

Europe +32 (0) 10 84 40 01

Middle East +971 (0)4 887 0815 Asia +65 6795 8114

Commissioning date 2016.12.01 14:28:52

Last service date 2016.12.01 14:28:52

Service interval 1 year

Next servicedue 2016.12.01 14:28:52

Complete service

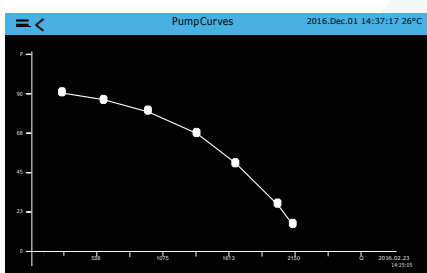
Live view

Nameplate Information

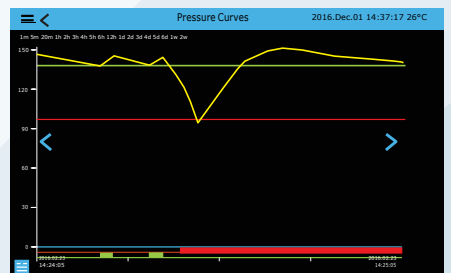
Jockey pump cut-out 110

Jockey pump cut-in 130

PUMP CURVES



PRESSURE CURVES



MODEL GPD / WEIGHT & DIMENSIONS

Shipping Weight & Dimensions				
Starting Voltage	WALL MOUNT		FLOOR MOUNT	
	Approx. Dimensions in inches (mm)	Approx. Weight in Lbs (kg)	Approx. Dimensions in inches (mm)	Approx. Weight in Lbs (kg)
12 V.DC	27 1/8" h x 27 1/8" w x 9" d (700 x 600 x 228)	70 (32)	47 1/8" h x 27 1/8" w x 9" d (1208 x 600 x 228)	95 (43)
24 V.DC				

HOW TO ORDER: GPD / 12 OR 24 VDC / 120VAC OR 208 to 240VAC / Options

Ex.: GPD / 12 / 220 / B1, C7

AMERICAS
Tornatech Inc.
Head Office
Laval, Quebec, Canada
Tel: + 1 514 334 0523
Tollfree: +1 800 363 8448

EUROPE
Tornatech Europe SPRL
Wavre, Belgium
Tel: + 32 (0) 10 84 40 01

MIDDLE EAST
Tornatech FZE
Dubai, United Arab Emirates
Tel: + 971 (0)4 887 0615

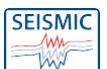
ASIA
Tornatech Pte Ltd.
Singapore
Tel: +65 6795 8114
Tel: +65 6795 7823

GPX Series

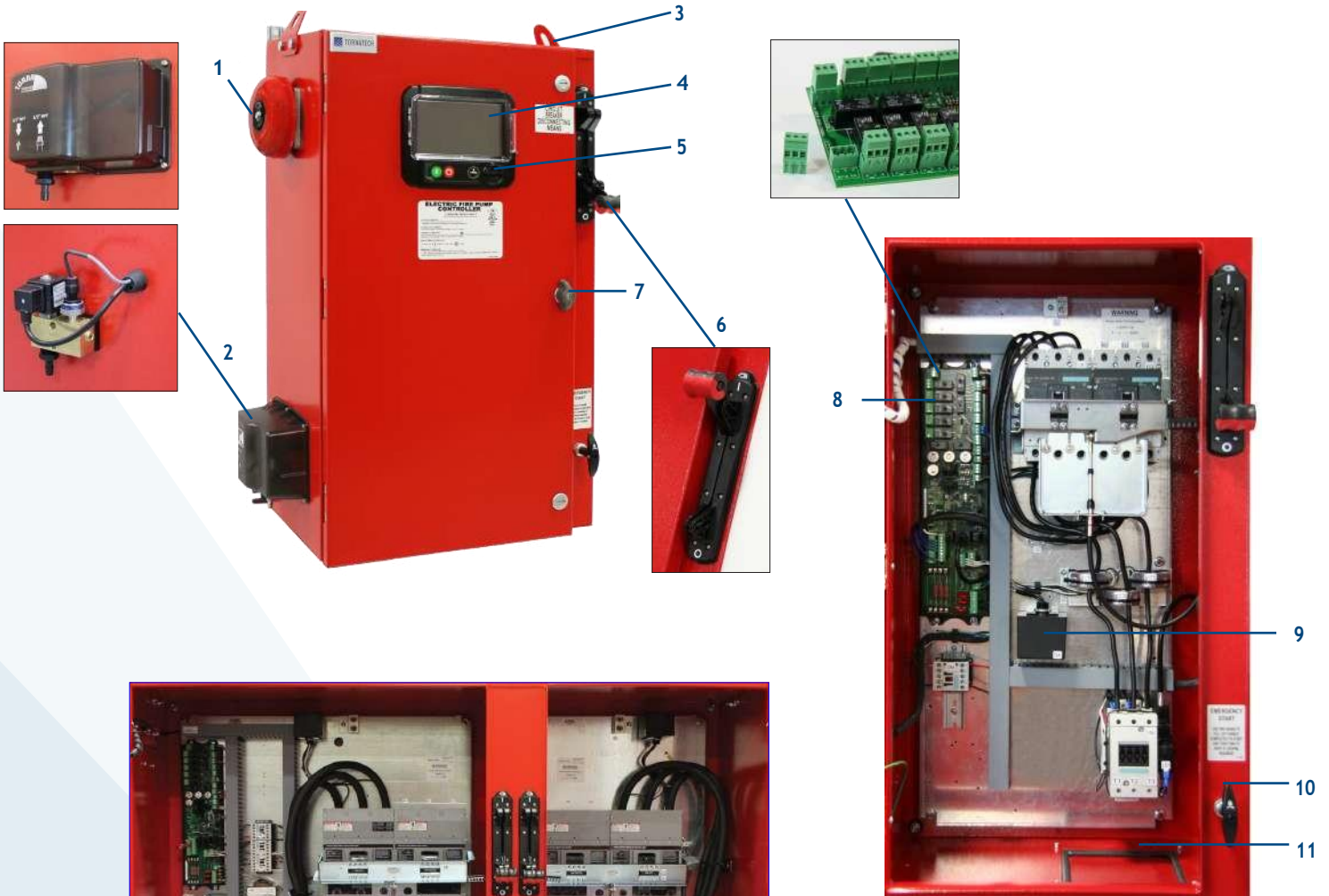
Full Service - Electric Fire Pump Controllers

Standard Features

- ViZiTouch V2 operator interface
- NEMA 2 assembly
- Pressure and event recorder
- Voltage and amperage display
- Single operator for both isolating switch and circuit breaker
- Surge arrestor
- Lifting lugs
- Run test push button
- Available with automatic power transfer switch
- Emergency start handle
- Start and stop pushbuttons
- Locked rotor protector
- Phase reversal indication
- Remote start / deluge valve start provision
- Pressure transducer and run test solenoid valve externally mounted
- Gland plate
- Audible alarm
- Alarm contacts for remote indication
- Available with full voltage and reduced voltage starting



- 11. Alarm bell
- 12. Externally mounted pressure transducer and run test solenoid valve with protective cover
- 13. Lifting Lugs
- 14. ViZiTouCh V2 operator interface
- 15. Exterior USB Port
(Interior USB port also supplied)
- 16. Custom designed Isolation switch /
Circuit breaker operator handle
- 17. Key lock
- 18. Remote alarm contacts with removable
terminals
- 19. Surge arrestor
- 20. Custom designed emergency start
mechanism with integrated limit switch
- 21. Gland plate
- 22. Automatic power transfer switch



GPA MODEL SHOWN



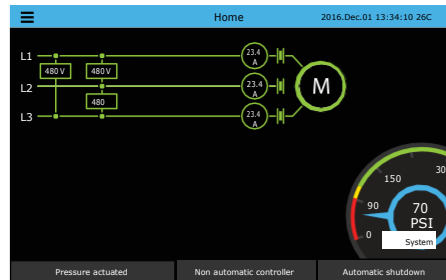
GPW + GPU MODEL SHOWN

ViZi TOUCH ViZiTouch V2 Operator Interface

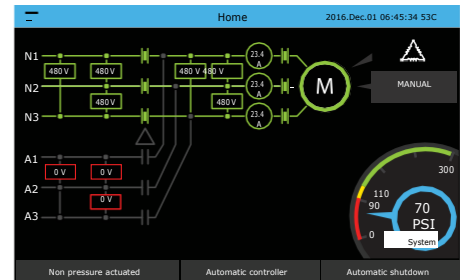


HOME SCREEN

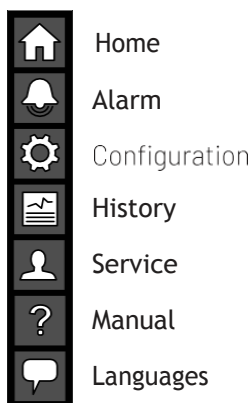
Electric Fire Pump Controller



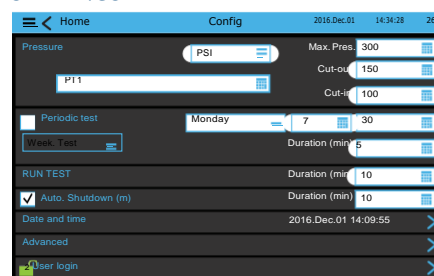
Electric Fire Pump Controller with Automatic Transfer Switch



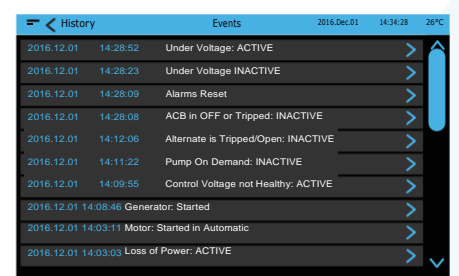
ON-SCREEN MENU



SETTINGS



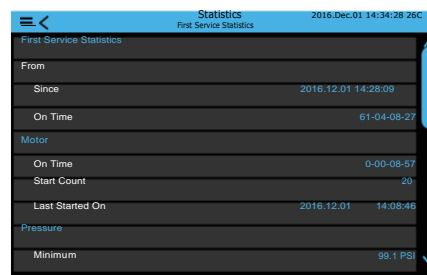
EVENTS



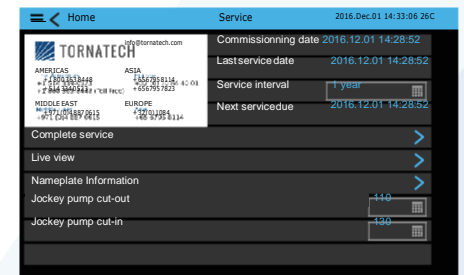
VIZITOUCH V2 MAJOR FEATURES INCLUDE:

- Touch screen operation with 7" color display and intuitive graphics
- Multi-language
- Upgradable software
- Password protected

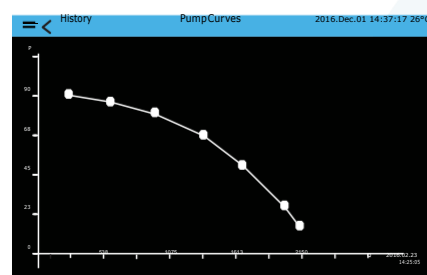
HISTORY/STATISTICS



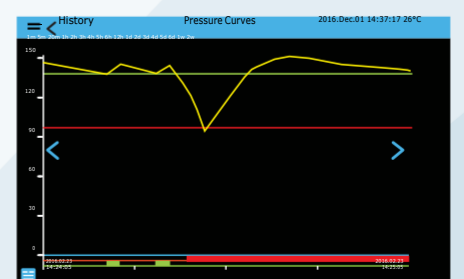
SERVICE



PUMP CURVES



PRESSURE CURVES



GPX SERIES / VOLTAGE / HP / SHORT CIRCUIT WITHSTAND RATING / SEISMIC CERTIFICATION

Model	Voltage	HP	Short Circuit Withstand Rating	Seismic Certified
GPA GPA+GPU	200V - 208V	5-150	100kA	Yes
		200	50kA	No
	220V - 240V	5-200	100kA	Yes
		250	50kA	No
GPP GPP+GPU	380V - 416V	5-300	100kA	Yes
		350-450	50kA	No
GPY GPY+GPU	440V - 480V	5-400	100kA	Yes
		450		No
		500	50kA	Yes
	575V - 600V	5-500		Yes
GPR GPR+GPU	200V - 208V	5-150	100kA	Yes
		200	50kA	No
	220V - 240V	5-200	100kA	Yes
		250	50kA	No
	380V - 416V	5-300	100kA	Yes
		350-450	50kA	No
	GPW GPW+GPU	5-400	100kA	Yes
		450		No
		500	50kA	Yes
	575V - 600V	5-500		Yes

Model	Voltage	HP	Short Circuit Withstand Rating	Seismic Certified
GPS GPS+GPU	200V - 208V	5-100	100kA	Yes
		150		No
		200	50kA	
	220V - 240V	5-150	100kA	Yes
		200		No
		250	50kA	
	380V - 416V	5-250	100kA	Yes
		300		No
		350-450	50kA	
	440V - 480V	5-300	100kA	Yes
		350		No
		400		
		450		
		500	50kA	Yes
	575V - 600V	5-400		
		450		
		500		No

HOW TO ORDER: GPx - V / HP / Ph / Hz / Options

Ex.: GPA - 208 / 30 / 3 / 60 / Options

AMERICAS
Tornatech Inc.
Head Office
Laval, Quebec, Canada
Tel: + 1 514 334 0523
Tollfree: +1 800 363 8448

EUROPE
Tornatech Europe SPRL
Wavre, Belgium
Tel: + 32 (0) 10 84 40 01

MIDDLE EAST
Tornatech FZE
Dubai, United Arab Emirates
Tel: + 971 (0) 4 887 0615

ASIA
Tornatech Pte Ltd.
Singapore
Tel: + 65 6795 8114
Tel: + 65 6795 7823

Model JP

Jockey Pump Controller

Full voltage across the line starter
Solid State Controls with Digital
iPD+ Operator Interface

Standard Features

- Solid state controls with digital iPD+ operator interface
- All adjustments on door front
- Visual indicators
 - Manual motor run
 - Automatic motor run
 - System pressure
 - Automatic mode
 - Ou mode
 - Motor overload
 - Pump start counter
 - Elapsed time meter (hours / non-resettable)
- Timers
 - Minimum run period timer
 - Sequential start timer
- Operators
 - OFF-AUTO pushbutton
 - Start and stop pushbuttons
- NEMA 2 enclosure
- Pressure transducer
- Fuseless magnetic motor starter

The model JP jockey pump controllers are specifically designed to control jockey pumps in order to maintain the desired water pressure in fire pump serviced systems. A jockey pump installation prevents unnecessary starting of the fire pump due to small leaks in the sprinkler system piping.

The model JP jockey pump controller is supplied with the front door mounted, solid state controls with digital iPD+ operator interface. The iPD+ allows the user to set and adjust all parameters required such as start and stop pressures, ON or OFF timers and units of measure (psi, bar, kPA, feet of head, meter of head) without having to open the controller door. The iPD+ also continuously displays the system pressure and the start and stop pressure settings. LED visual indications include manual motor run, automatic motor run, system pressure above stop pressure setting, system pressure in-between



start and stop pressure setting and system pressure below start pressure setting.

The standard power circuit consists of a horsepower rated disconnect switch, a thermo-magnetic motor protector and a motor contactor for across the line full voltage starting. Consult factory for other types of motor protection or starting methods available.

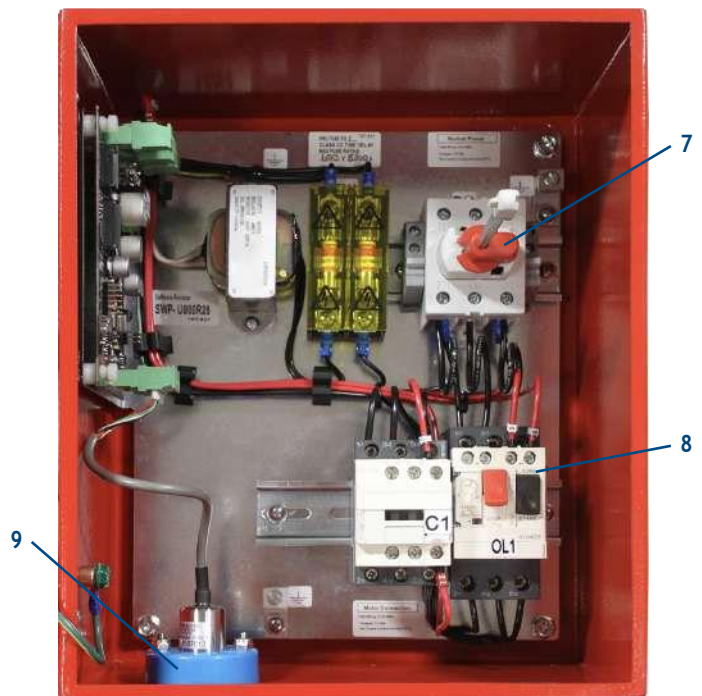
Individual models are specific to the voltage available on site:

- JP1: 120 V / Hp (kW) / single phase / 60Hz
- JP2: 220 to 240 V / Hp (kW) / single phase / 50 or 60Hz
- JP3: 208 to 600 V / Hp (kW) / three phase / 50 or 60Hz



OPTIONAL

1. High luminosity four digit digital display
2. System status diagnostic LED's for:
 - i. Green: system pressure at or above cut-out value
 - ii. Yellow: system pressure between cut-in and cut-out
 - iii. Red: system pressure at or below cut-in value
3. Motor run LEDs (manual start or automatic start)
4. Start and stop pushbuttons
5. Navigation keypad
6. OFF-AUTO position pushbutton and visual indication (LED)
7. Horsepower rated door interlocked rotary type disconnect switch
8. Fuseless magnetic motor starter with thermo-magnetic motor protector and horsepower rated contactor
9. Pressure transducer with 0-600psi range and stainless steel construction



HOW TO ORDER: JPx - V / HP / Ph / Hz / Options
 Ex.: JP3 - 208 / 2 / 3 / 60 / Options

AMERICAS
 Tornatech Inc.
 Head Office
 Laval, Quebec, Canada
 Tel: + 1 514 334 0523
 Tollfree: +1 800 363 8448

EUROPE
 Tornatech Europe SPRL
 Wavre, Belgium
 Tel: + 32 (0) 10 84 40 01

MIDDLE EAST
 Tornatech FZE
 Dubai, United Arab Emirates
 Tel: + 971 (0)4 887 0615

ASIA
 Tornatech Pte Ltd.
 Singapore
 Tel: + 65 6795 8114
 Tel: + 65 6795 7823