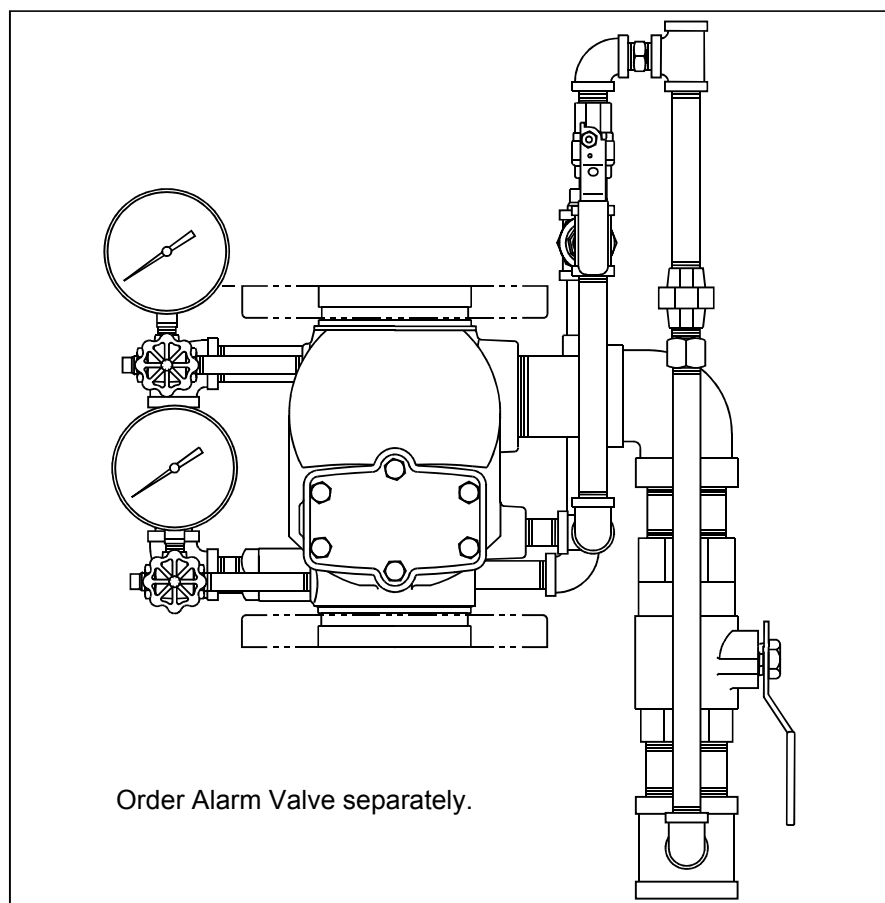




TECHNICAL DATA

MODEL J-1 ALARM CHECK VALVE VERTICAL TRIM Maximum 250 PSI WWP



Order Alarm Valve separately.

This Trim Chart is for use with the following Viking Trim Sets

Valve Size	Standard* Trim P/N	Foam System** Trim P/N
3"	08633	08637
4"	08634	08638
6"	08635	08639
8"	08636	08640

* Standard Trim Sets for Model J-1 Alarm Check Valves include galvanized nipples and fittings. (See Trim Chart Notes).

** Trim sets for Model J-1 Alarm Check Valves used on pre-mixed foam systems consist of black steel nipples and cast iron or ductile iron fittings. (See Trim Chart Notes.)

For detailed trim chart, open to page 27 b.

NOTES: For use with Trim Chart on page 27 b.
(open fold-out)

General Notes:

Valve must be trimmed as shown. Any deviation from trim size or arrangement may affect the proper operation of the valve.

All pipe, 3/4" (20 mm) and smaller, shall be galvanized steel except when other materials are specified in the technical data for the system used. All trim components must be listed for up to 250 PSI (1 724 kPa) Water Working Pressure.

When the Model J-1 Alarm Check Valve is used on pre-mixed foam systems, trim piping must be of black steel pipe with cast iron or malleable iron fittings unless other materials are specified in the Technical data for the system used.

Dimensions in parentheses are millimeter.

Note 1: When using a water motor alarm, a strainer is required. Circuit closer vent trim may be required when an alarm pressure switch is used. (See technical data for the retard chamber.)

Note 2: This location may be used for optional pressure relief valve (not available from Viking). Install 3/4" (20 mm) tee and listed pressure relief valve.

Note 3: To supply an optional excess pressure pump (not available from Viking and not a listed assembly), replace 1/2" ell marked "A" with a tee. Replace 3/4" ell marked "B" with a tee to connect outlet from excess pressure pump. Do not exceed listed water working pressure rating of system components. Perform hydrostatic tests in accordance with recognized Installation Standards.

Note 4: Location for non-interruptible pressure switch. When waterflow through the alarm valve occurs, supply to this location cannot be shut off until water flow through the alarm valve stops.

Note 5: Component specified is included in Viking trim sets; do not substitute. Use of components other than specified will void any listings and approvals and may affect operation of the valve.

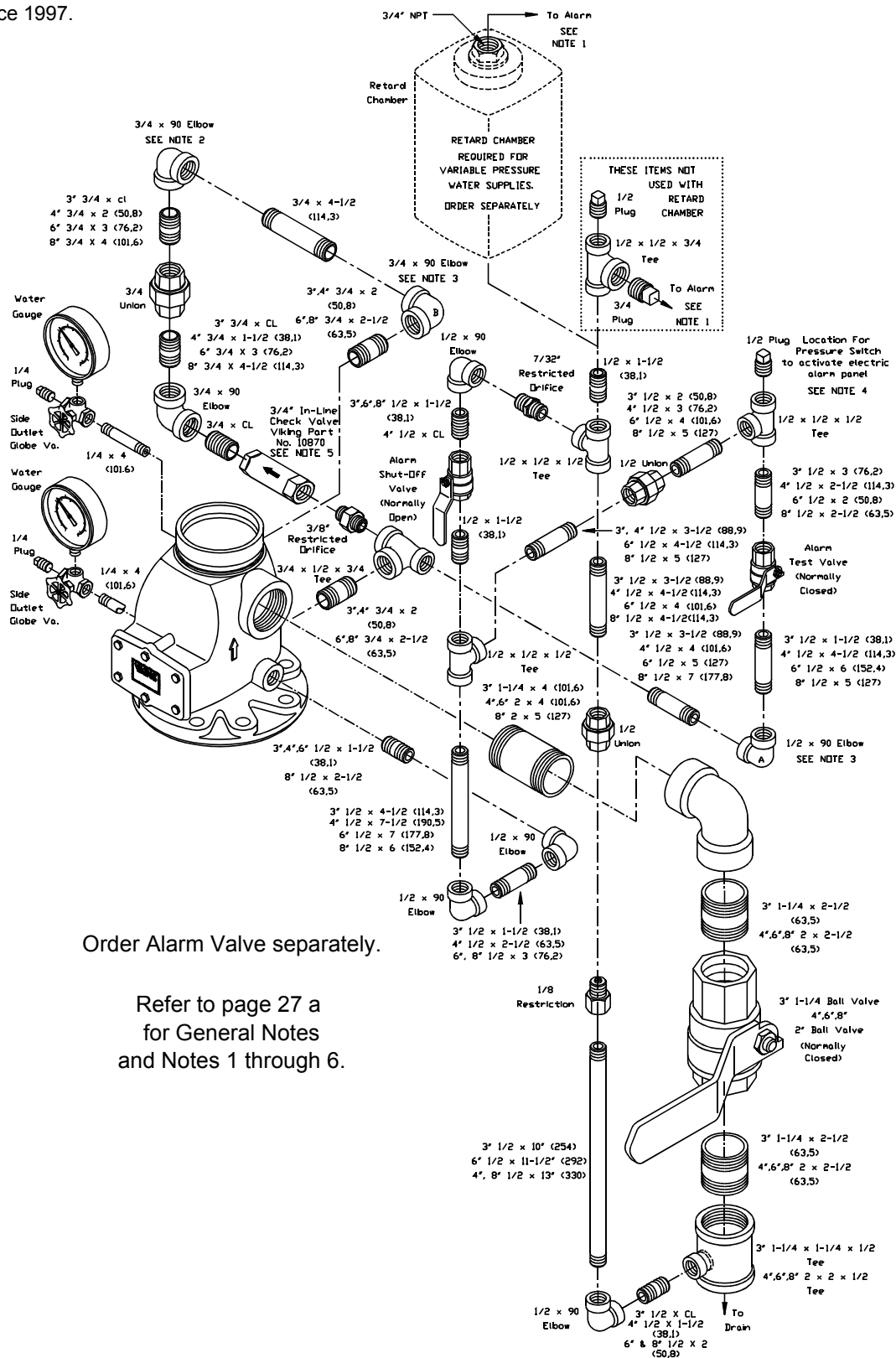
Note 6: 300 PSI (7 620 kPa) water pressure gauges are provided with trim. 600 PSI (15 240 kPa) water pressure gauges are available. Order separately when needed*. Refer to current Viking Price Book.

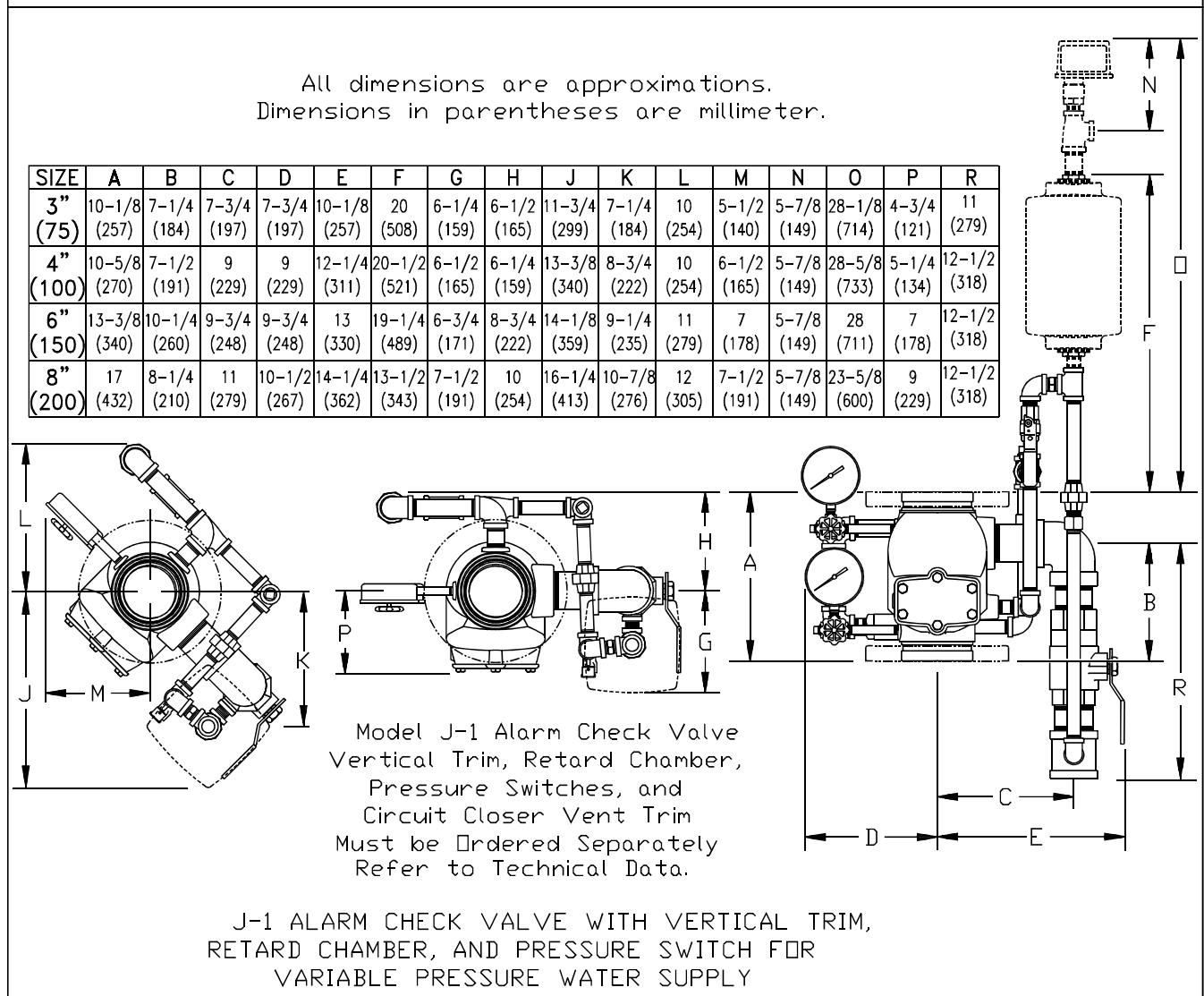
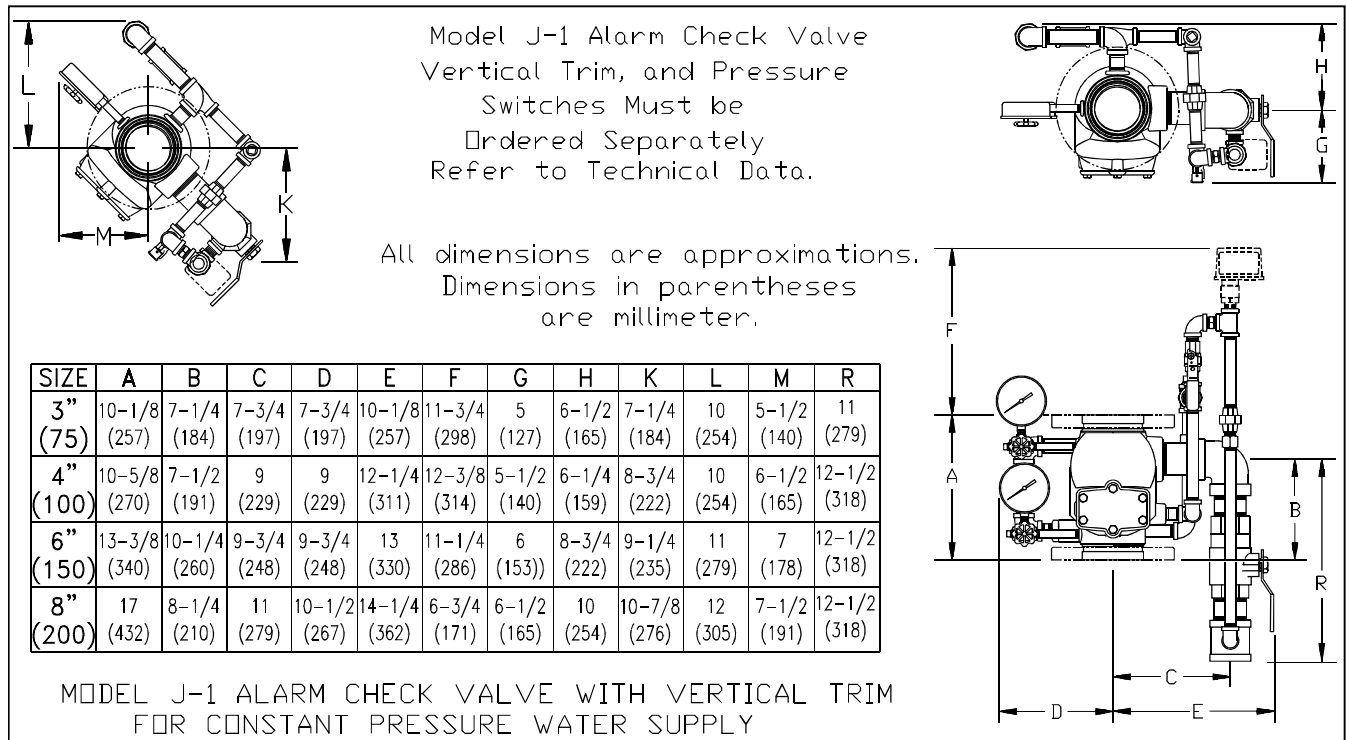
* NFPA 13 requires gauges to have a minimum limit not less than twice the normal water working pressure at the point where the gauges are installed. When normal water working pressure exceeds 150 PSI (3 810 kPa), order 600 PSI (15 240 kPa) water pressure gauges separately.



MODEL J-1
ALARM CHECK VALVE
VERTICAL TRIM
Maximum 250 PSI WWP

Available since 1997.





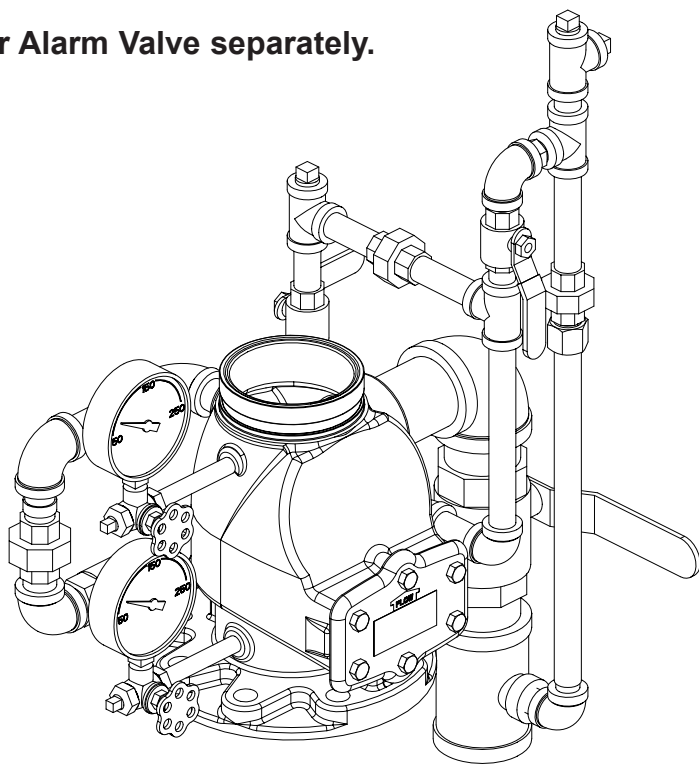
THIS PAGE
INTENTIONALLY
LEFT BLANK



TECHNICAL DATA

MODEL J-1 ALARM CHECK VALVE VERTICAL TRIM

Order Alarm Valve separately.



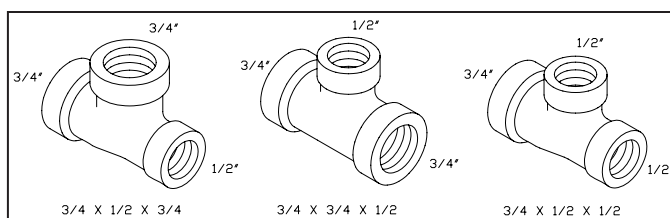
This Trim Chart is for use with the following Viking Trim Sets

Valve Size	Galvanized	Brass
3" (DN80)	08633	11428
4" (DN100)	08634	11429
6" (DN150)	08635	11430
8" (DN200)	08636	11431

NOTES: For use with Trim Chart on page 27 b.

General Notes:

- Valve must be trimmed as shown. Any deviation from trim size or arrangement may affect the proper operation of the valve.
- All pipe, 3/4" (20 mm) and smaller, shall be galvanized steel except when other materials are specified in the technical data for the system used. All trim components must be listed for up to 250 PSI (17.2 bar) Water Working Pressure.
- Dimensions in parentheses are millimeter.
- Viking uses ASME fitting designations. Tee's shall be called out in the following order: 1 - largest outlet on run; 2 - Smaller outlet on run; 3 - Branch size.



Note 1: When using a water motor alarm, a strainer is required. Circuit closer vent trim may be required when an alarm pressure switch is used. (See technical data for the retard chamber.)

Note 2: This location may be used for optional pressure relief valve (not available from Viking). Install 3/4" (20 mm) tee and listed pressure relief valve.

Note 3: To supply an optional excess pressure pump (not available from Viking and not a listed assembly), replace 1/2" ell marked "A" with a tee. Replace 3/4" ell marked "B" with a tee to connect outlet from excess pressure pump. Do not exceed listed water working pressure rating of system components. Perform hydrostatic tests in accordance with recognized Installation Standards.

Note 4: Location for non-interruptible pressure switch. When waterflow through the alarm valve occurs, supply to this location cannot be shut off until water flow through the alarm valve stops.

Note 5: Component specified is included in Viking trim sets; do not substitute. Use of components other than specified will void any listings and approvals and may affect operation of the valve.

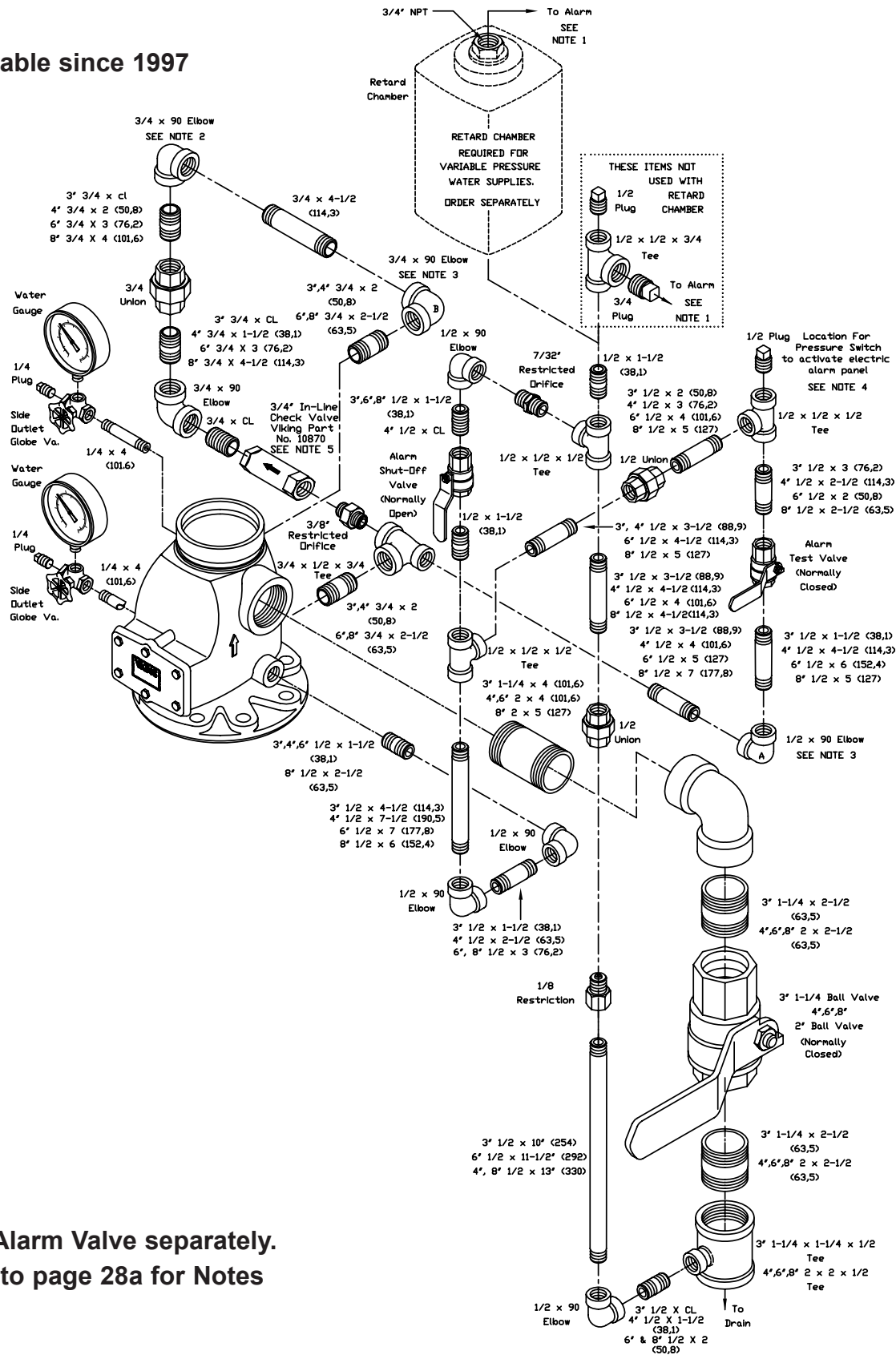
Note 6: 300 PSI (20.7 bar) water pressure gauges are provided with trim. 600 PSI (41.4 bar) water pressure gauges are available. Order separately when needed*. Refer to current Viking Price Book.

* NFPA 13 requires gauges to have a minimum limit not less than twice the normal water working pressure at the point where the gauges are installed. When normal water working pressure exceeds 150 PSI (10.3 bar), order 600 PSI (41.4 bar) water pressure gauges separately.



MODEL J-1 ALARM CHECK VALVE VERTICAL TRIM

Available since 1997

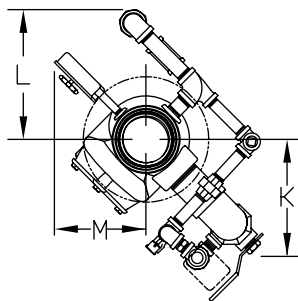


**Order Alarm Valve separately.
Refer to page 28a for Notes**

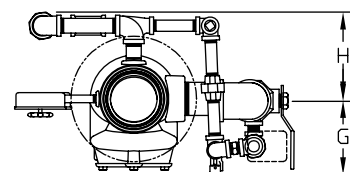


TECHNICAL DATA

MODEL J-1 ALARM CHECK VALVE VERTICAL TRIM



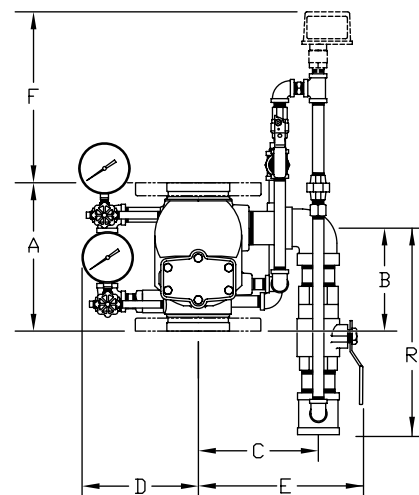
Model J-1 Alarm Check Valve
Vertical Trim, and Pressure
Switches Must be
Ordered Separately
Refer to Technical Data.



All dimensions are approximations.
Dimensions in parentheses
are millimeter.

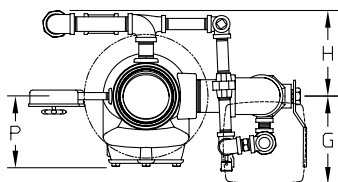
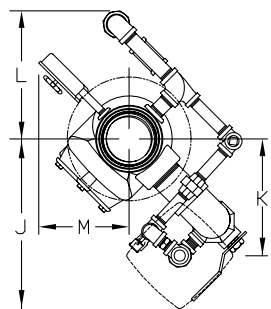
SIZE	A	B	C	D	E	F	G	H	K	L	M	R
3" (DN80)	10-1/8 (257)	7-1/4 (184)	7-3/4 (197)	7-3/4 (197)	10-1/8 (257)	11-3/4 (298)	5 (127)	6-1/2 (165)	7-1/4 (184)	10 (254)	5-1/2 (140)	11 (279)
4" (DN100)	10-5/8 (270)	7-1/2 (191)	9 (229)	9 (229)	12-1/4 (311)	12-3/8 (314)	5-1/2 (140)	6-1/4 (159)	8-3/4 (222)	10 (254)	6-1/2 (165)	12-1/2 (318)
6" (DN150)	13-3/8 (340)	10-1/4 (260)	9-3/4 (248)	9-3/4 (248)	13 (330)	11-1/4 (286)	6 (153)	8-3/4 (222)	9-1/4 (235)	11 (279)	7 (178)	12-1/2 (318)
8" (DN200)	17 (432)	8-1/4 (210)	11 (279)	10-1/2 (267)	14-1/4 (362)	6-3/4 (171)	6-1/2 (165)	10 (254)	10-7/8 (276)	12 (305)	7-1/2 (191)	12-1/2 (318)

MODEL J-1 ALARM CHECK VALVE WITH VERTICAL TRIM
FOR CONSTANT PRESSURE WATER SUPPLY

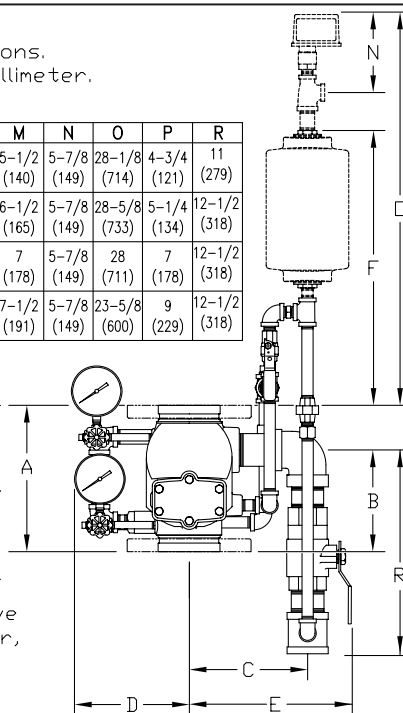


All dimensions are approximations.
Dimensions in parentheses are millimeter.

SIZE	A	B	C	D	E	F	G	H	J	K	L	M	N	O	P	R
3" (DN80)	10-1/8 (257)	7-1/4 (184)	7-3/4 (197)	7-3/4 (197)	10-1/8 (257)	20 (508)	6-1/4 (159)	6-1/2 (165)	11-3/4 (299)	7-1/4 (184)	10 (254)	5-1/2 (140)	5-7/8 (149)	28-1/8 (714)	4-3/4 (121)	11 (279)
4" (DN100)	10-5/8 (270)	7-1/2 (191)	9 (229)	9 (229)	12-1/4 (311)	20-1/2 (521)	6-1/2 (165)	6-1/4 (159)	13-3/8 (340)	8-3/4 (222)	10 (254)	6-1/2 (165)	5-7/8 (149)	28-5/8 (733)	5-1/4 (134)	12-1/2 (318)
6" (DN150)	13-3/8 (340)	10-1/4 (260)	9-3/4 (248)	9-3/4 (248)	13 (330)	19-1/4 (489)	6-3/4 (171)	8-3/4 (222)	14-1/8 (359)	9-1/4 (235)	11 (279)	7 (178)	5-7/8 (149)	28 (711)	7 (178)	12-1/2 (318)
8" (DN200)	17 (432)	8-1/4 (210)	11 (279)	10-1/2 (267)	14-1/4 (362)	13-1/2 (343)	7-1/2 (191)	10 (254)	16-1/4 (413)	10-7/8 (276)	12 (305)	7-1/2 (191)	5-7/8 (149)	23-5/8 (600)	9 (229)	12-1/2 (318)



Model J-1 Alarm Check Valve
Vertical Trim, Retard Chamber,
Pressure Switches, and
Circuit Closer Vent Trim
Must be Ordered Separately
Refer to Technical Data.



J-1 ALARM CHECK VALVE WITH VERTICAL TRIM,
RETARD CHAMBER, AND PRESSURE SWITCH FOR
VARIABLE PRESSURE WATER SUPPLY

THIS PAGE
INTENTIONALLY
LEFT BLANK