



## Product Specification



### Joong Ang Remote Controlled Monitor

Model	JHML-65ENC
Type	Electric operation & Manual operation
Capacity	Max. 3.785 LPM
Flange Inlet	DN65-2 1/2", DN100-4"
Outlet Monitor	FE65
Flange of standard	Ansi # 150
Motor Elevation	+85°~ -45° (Option +90°~ -60°)
Motor Rotation	340 Degree (Left 170°, Right 170°)
Power Supply	AC 220V
Material	Aluminium/Bronze
Finish Color	Red

### Joong Ang Remote Controlled Monitor

Model	JHML-65ENB
Type	Electric operation & Manual operation
Capacity	Max. 3.785 LPM
Flange Inlet	DN65-2 1/2", DN100-4"
Outlet Monitor	FE65
Flange of standard	Ansi # 150
Motor Elevation	+85°~ -45° (Option +90°~ -60°)
Motor Rotation	340 Degree (Left 170°, Right 170°)
Power Supply	DC 24V
Material	Aluminium/Bronze
Finish Color	Red



### Joong Ang Remote Controlled Monitor

Model	JHML-100EN
Type	Electric operation & Manual operation
Capacity	Max. 7.571 LPM
Flange Inlet	DN100-4", DN150-6"
Outlet Monitor	FE75
Flange of standard	Ansi # 150
Motor Elevation	+85°~ -45° (Option +90°~ -60°)
Motor Rotation	340 Degree (Left 170°, Right 170°)
Power Supply	AC 220V
Material	Aluminium/Bronze
Finish Color	Red



## Product Specification



### Joong Ang Remote Controlled Monitor

Model	JHML-100S
Type	Oil Hydraulic
Flange Inlet	DN100-4"
Outlet Monitor	FE100
Flange of standard	Ansi # 150
Working pressure	16 Bar
Motor Elevation	+90°~ -75°
Motor Rotation	360 Degree (Left 180°, Right 180°)
Material	Bronze
Finish Color	Red

### Joong Ang Remote Controlled Monitor

Model	JHML-100E
Type	Electric operation
Flange Inlet	DN100-4"
Outlet Monitor	FE65
Flange of standard	Ansi # 150
Working pressure	16 Bar
Motor Elevation	+90°~ -75°
Motor Rotation	340 Degree (Left 170°, Right 170°)
Material	Bronze
Finish Color	Red

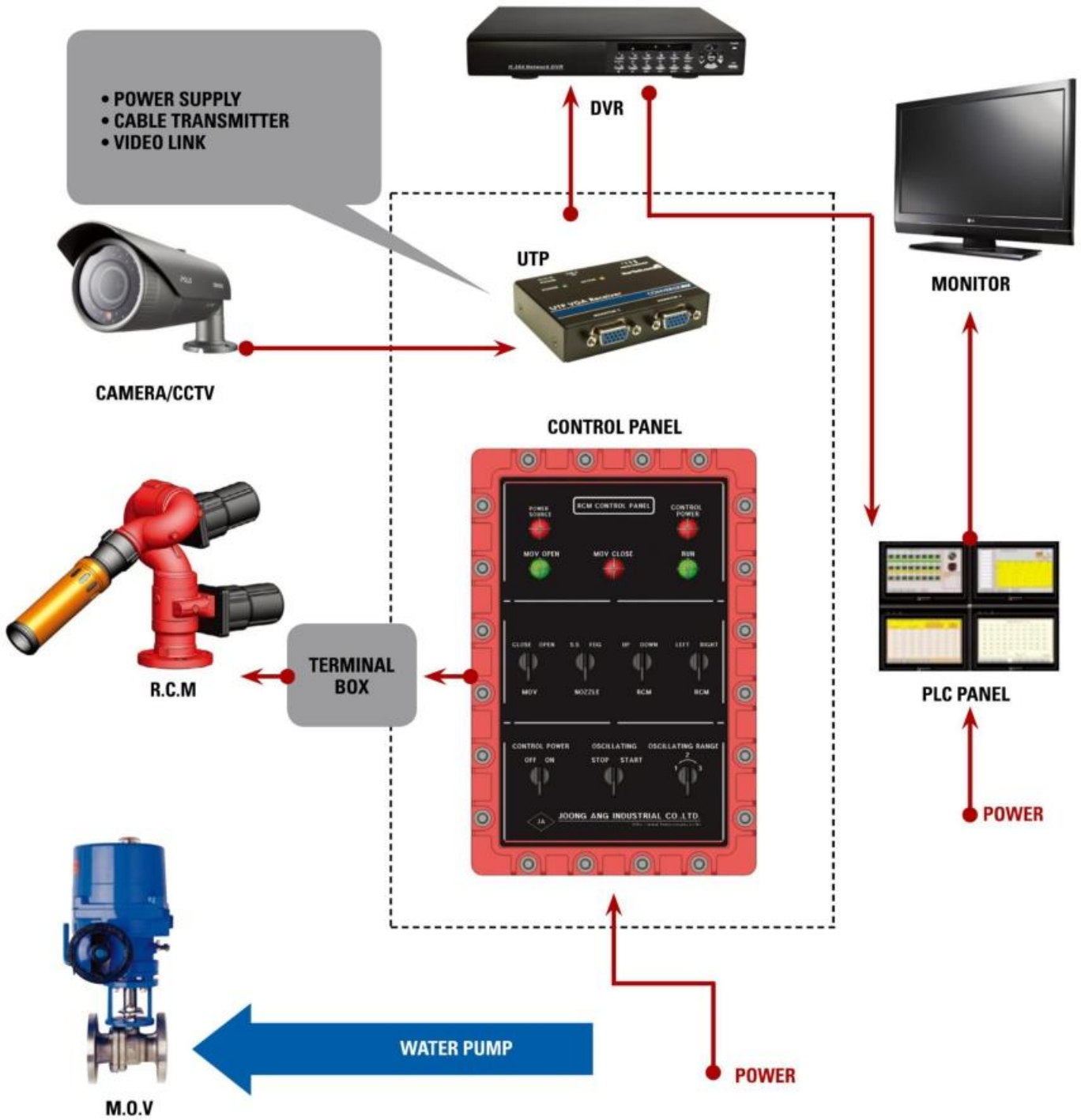


### Joong Ang Remote Controlled Monitor

Model	JHML-65E
Type	Electric operation
Flange Inlet	DN65-2 1/2"
Outlet Monitor	FE65
Flange of standard	Ansi # 150
Working pressure	16 Bar
Motor Elevation	+90°~ -75°
Motor Rotation	340 Degree (Left 170°, Right 170°)
Material	Bronze
Finish Color	Red

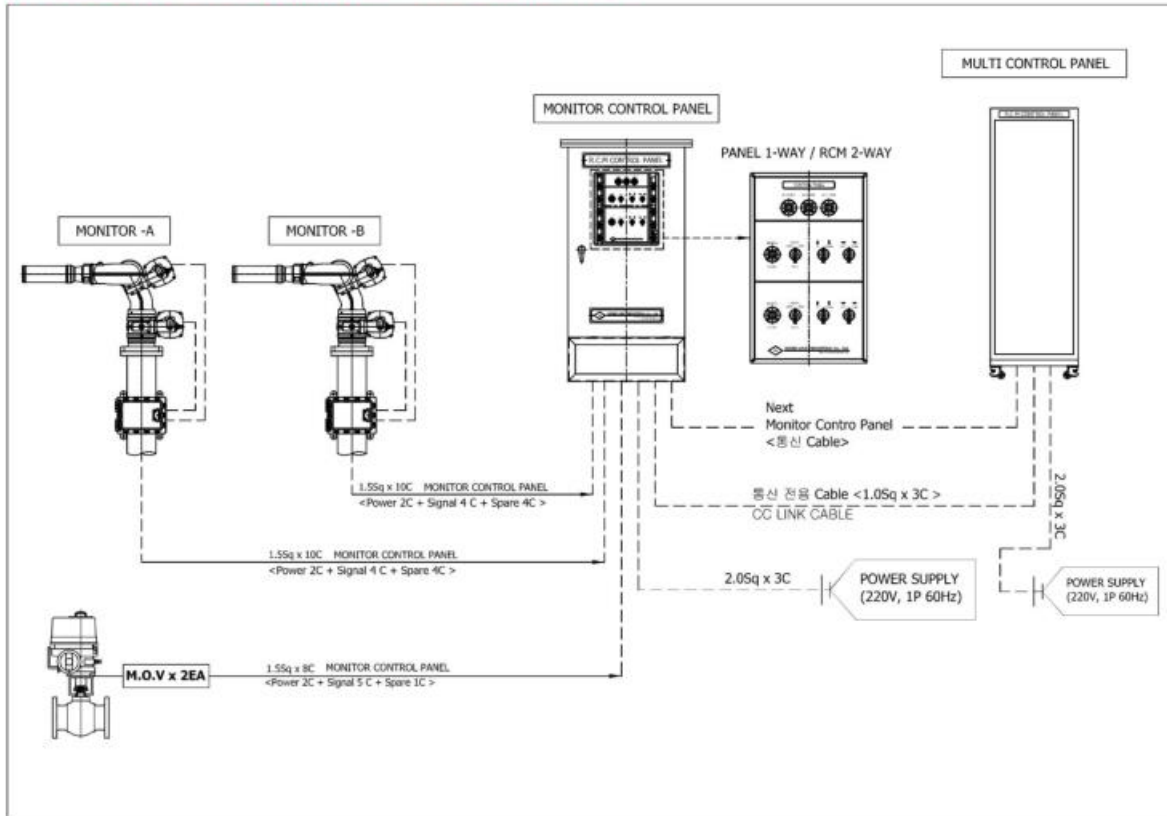


Product Specification

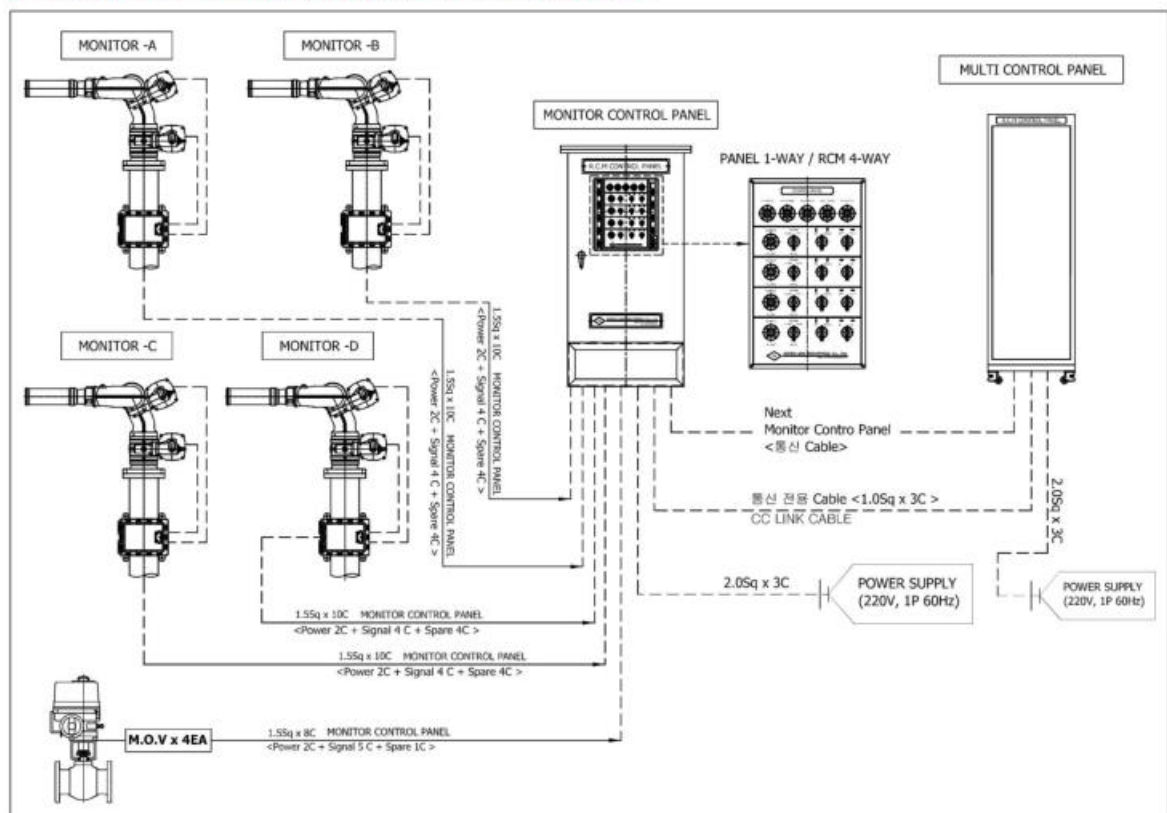


Product Specification

**SYSTEM LAYOUT - Two(2) monitors controlled with One(1) L.C.P.**



**SYSTEM LAYOUT - Four(4) monitors controlled with One(1) L.C.P.**





110 Cartier Cres, Hamilton Ontario, Canada, L8W-3T8  
Tel: +905-920-5812 . Email: canatechfre@gmail.com

*Safety for your life*

A close-up, grayscale photograph of a fire hose nozzle, showing its various sections and the handle. The nozzle is oriented diagonally from the bottom right towards the top left.

**FIRE PROTECTION**